



# Table of Contents

[Overview](#)

[Menu Commands](#)

[Setup MIDI Ports / MIDI](#)

[Multitasking](#)

[Glossary](#)

[Technical Support](#)

[Thanks](#)

[Order Form](#)



**CanvasMan**™  
SOUNDCanvas Editor/Librarian  
Copyright © Jeff Cazel, 1992-1993  
All Rights Reserved



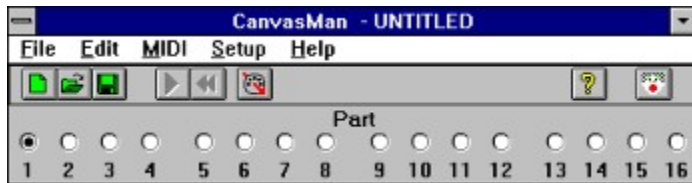
# Glossary

*Lodewijk* is the Dutch word for "Ludwig". In American English, this MIDI-oriented term means *consumes beer heavily and/or in large quantities*





# Menus



You can select most of **CanvasMan's** options from the menu. The toolbar is the row of graphical icons below the menu that duplicates some of the options.

File Menu

Edit Menu

MIDI Menu

Setup Menu

Help Menu

## File Menu



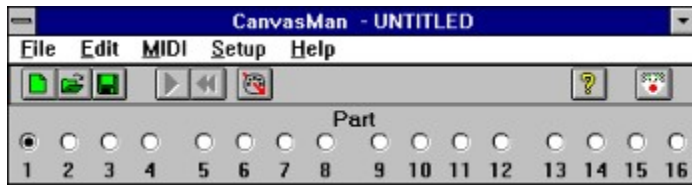
## **Edit Menu**

## **MIDI Menu**

# Setup Menu

# Help Menu

# Toolbar







# Setup MIDI Ports / MIDI Multitasking

## Setup MIDI Ports

Setting up your MIDI ports consists of two dialog boxes: the **MIDI Configure** dialog and the **Route MIDI Data** dialog. **CanvasMan** disables MIDI I/O during these dialogs.

**MIDI Configure** allows you to select as many output ports as you have and 0 or 1 input port.

**Output:** If you have more than one output port, you can have **CanvasMan** play your MIDI files on some or all of them. To do so, sequence the output ports to match your multi-port MIDI files. Do so by moving the relevant ports from **Available Output Ports** to **Output Ports**: in the desired order. If you have a single MIDI interface like most of us, you can simply choose your listed interface as output port #1.

If you can avoid using the **Microsoft MIDI Mapper** output port, you should do so--you cannot open it for multiple concurrent output. See **MIDI Multitasking** (below) for more information.

**Input:** *Windows* does not allow more than one program to use a given input port at the same time. Thus, if you plan to run **CanvasMan** at the same time as another MIDI program that supports MIDI Thru, you should not select an input port. If you run it at the same time as the *WinJammer* sequencer program, however, you can select an input port since **CanvasMan** uses *WinJammer's* MIDI I/O facility. See **MIDI Multitasking** (below) for more information.

**Route MIDI Data** allows you to select which configured ports you'll use for Thru Input, Thru Output and System Exclusive ("sysex") Output.

If you **Configure** both input and output ports, MIDI Thru will turn On at the end of the **Route MIDI Data** dialog.

## MIDI Multitasking

*Windows'* capability of running multiple MIDI programs at the same time makes it vastly superior to DOS MIDI. You maximize this capability by using MIDI drivers that allow multiple concurrent output ("multi-open").

Multi-open drivers, for example, allow you to change patch settings on your *SOUNDCanvas* with **CanvasMan** at the same time you play a song in *Band-In-A-Box*. Note that the **MIDI Mapper** does not allow multi-opens. Note also that no input drivers support multi-open use. This is why you should select **<none>** as **CanvasMan's** input port if your sequencer is recording.

The *MPU-401* driver that comes with *Windows 3.1* does not allow multiple concurrent output, either. However, **Twelve Tone Systems** (maker of *Cakewalk Professional for Windows*) has created a better *MPU-401* driver that does allow this. If you already run *WinCoke* with an *MPU-401*, you should already have this driver installed. If you don't have the driver, you can get it in *WinCoke's* demo (from probably any MIDI-oriented BBS). (On *CompuServe*, grab **WDEMO.TXT** and **WDEMO.ZIP** from library 3 in the **MIDI AVEN** forum. Be sure to read **WDEMO.TXT** before unzipping **WDEMO.ZIP**.)

Note finally that **CanvasMan** uses *WinJammer's* MIDI I/O facility (**MIDILIB.DLL**); for the purpose of this discussion, *WinJammer* and **CanvasMan** are one program. Thus, when running **CanvasMan** and



*WinJammer* together, you should specify an input port.

Understanding these concepts is probably the most confusing aspect of *Windows* MIDI.



# Ordering Instructions

You can register all **Jeff Cazel MIDI** programs with the attached order form. Read these instructions and then click on the words "Order Form" below.

Registered users can access the enhanced features of and download free updates to the program(s). And finally, your "please register" screen will go away.

You must register a program to legally continue to use it. However, as shown on the order form, buying the disk and manual are optional.

## Order Form

\* \* \* \* \*  
\* \*

*CompuServe* users can register either **CanvasMan** or the **SongCanvas** online! The charge for the program will show up on your next *CompuServe* billing statement. Type `GO CIS:SWREG <Enter>` and follow the instructions. The registration ID for **CanvasMan** is #660; for the **SongCanvas**, it's #143. If you want to register both programs, however, you should do so directly through me since the package price is cheaper that way.

(To print a copy of this order form, select **File** (upper left corner) and then **Print Topic**. Select **Back** instead if you want to review the **Ordering Instructions** again.)

Send your check or money order payable in US dollars to:

**Jeff Cazel**  
**13265 SW Cottontail**  
**Beaverton, OR 97005 USA**

Your Name: \_\_\_\_\_

Address: \_\_\_\_\_

City/State/ZIP: \_\_\_\_\_

Country: \_\_\_\_\_

<b>Quantity</b>	<b>Shareware Registration</b>	<b>Each</b>	<b>Total</b>
_____	<i>CanvasMan</i> (Windows 3.1 GS Editor/Librarian)	\$59	_____
_____	<i>SongCanvas</i> (DOS GS Editor/Librarian)	\$49	_____
_____	<i>CanvasMan</i> (for registered <i>SongCanvas</i> users)	\$29	_____
_____	<i>SongCanvas</i> (for registered <i>CanvasMan</i> users)	\$24	_____
_____	Both <i>CanvasMan</i> and <i>SongCanvas</i>	\$69	_____
_____	<i>Rhodes Warrior</i> (DOS MK-80 Editor/Librarian)	\$39	_____

<u>Disk and Manual</u>		( X disk size: <b>5¼"</b> <b>3½"</b> )			
_____	<i>CanvasMan</i>	<input type="checkbox"/>	<input type="checkbox"/>	\$10	_____
_____	<i>SongCanvas</i>	<input type="checkbox"/>	<input type="checkbox"/>	\$10	_____
_____	<i>Rhodes Warrior</i>	<input type="checkbox"/>	<input type="checkbox"/>	\$10	_____

*Foreign orders please add \$10 total for shipping if ordering one or more manuals:* \$10 \_\_\_\_\_

**Grand Total Enclosed**

Send your check or money order payable in US dollars. **THANK YOU** for supporting shareware!





# Overview

**CanvasMan** is the *Windows 3.1* editor/librarian for **Roland's** *SOUNDCanvas* line of GS synthesizers (*SC-55*, *SCC-1*, *SC-155*, *JV-30* and many others). **CanvasMan** provides true MIDI multitasking -- you can run it by itself, while you jam with *Band-In-A-Box*, or while you sequence with *Cakewalk* and *WinJammer*. The wait is over for an easy-to-use ed/lib that takes full advantage of *Windows'* built-in multimedia capabilities.

**CanvasMan** can play your MIDI files as you edit -- you'll hear your changes instantly in the context of your own musical projects! It saves its patch data in standard binary format (also called "MIDIEX" format) so you can store patches with your sequences or as stand-alone banks. You can even create your own single- and multi-part sounds for easy future recall! Finally, **CanvasMan** gives you complete control over all Global, Part, and (soon!) Drum parameters.

(I have just started writing **CanvasMan's** online help, so it is far from complete.)







# Technical Support

## How to Contact Me

The fastest way to contact me is via a message on [CompuServe](#). I scan the DOS and *Windows* sections in the **MIDIFORUM** at least daily unless I'm on vacation. You can reach me there or through private electronic mail to my userID [72461,3345](#). Finally, you can send me US Mail at **13265 SW Cottontail Lane Beaverton, OR 97005 USA**.

If you have problems with **CanvasMan**, please note the versions for the program itself and the supplemental **MIDILIB.DLL** and **JJCMIDI.DLL**. This information displays on the **About** screen.





# Thanks

I thank our beta test team for their great suggestions and good spirits through numerous downloads and e-mailings:

Foremost, **Dan McKee** of **WinJammer Software Ltd.** made this project quick and painless with substantial help and encouragement and great suggestions throughout. **Dan, thanks again and again for your continued presence.**

**Kevin Weiner** of **FM Software** was the first beta tester. His numerous ideas and programming examples have helped shape all of my MIDI programs from the **Rhodes Warrior** through **CanvasMan**.

**Larry Roberts** was also an early beta tester. He has had several design ideas throughout the course, and his GS compositions and arrangements have provided inspiration to keep going.

**Parker Adams** of **The Parker Adams Group** has shared many good suggestions, including the multi-part sound idea. His marketing and ease of use ideas have been invaluable. Parker loves to create new sounds with **CanvasMan** and the **SongCanvas** when he's not tearing up the beach volleyball circuit.

**Lodewijk Claessen** has given the project an international flavor. His ever-present sense of humor has helped make the project fun, and his usability suggestions have been great.

**Paul Stillwell** has also provided some great design ideas and good feedback. Paul has quickly graduated from a MIDI novice to guru during this project.

**Jim Kometani** of **Twelve Tone Systems, Inc.** has provided valuable design suggestions from both a musician and technician's standpoint.

**Frank Sachse** is the newest beta tester. He is responsible for most of the artwork on the toolbar.

I also thank *CompuServe's* MIDI forum system operators for providing me with the resources to carry out this beta test: **John Hays**, **Tom LeCompte**, **Jim Maki**, **Frank Marousek**, and **Mike Ward**.

Finally I thank my wife **Elena Schultz Cazel** for putting up with all of this.

**CanvasMan** is dedicated to the memory of **Dee Cazel**.



